

State of Wyoming Corner Record

(In compliance with the *CORNER PERPETUATION AND FILING ACT*, Wyoming Statutes, 1997, Section 33-29-140, et. seq., and the Rules and Regulations of the Board of Registration for Professional Engineers and Professional Land Surveyors)

Reverse side of this form may be used if more space is needed.

Record of original survey and citation of source of historical information (if corner is lost or obliterated). Description of corner monumentation evidence found and/or monument and accessories established to perpetuate the location of this corner. Sketch of relative location of monument, accessories, and reference points with course and distance to adjacent corner(s) (if determined in this survey). Method and rationale for reestablishment of lost or obliterated corner.

G.L.O. Record: U.S. Deputy Surveyor, Edward D. Bright, Sept., 1868; 80.00 Chains...Set boulder 12 x 10 x 8 for cor. to secs 16,17,20,21.

Found: 14 ins. x 6 ins. x 7 ins. granite type stone marked with three chiseled grooves on the east edge and two chiseled grooves on the south edge and in a small buried collar of stones. Corner was also inline with a east west fence, west of the monument. A Wyoming Department of Transportation right of way marker lies 23.6 feet west of the corner. A 8 ins. diam. wood witness post for a fiber optic line bears 2.5 feet NE'ly of the corner monument.

Set: Aluminum post, 30 ins. long, 2 1/2 ins. diam., 26 ins. in the ground, with a 3 1/4 ins. aluminum cap marked as noted below. Also buried a 1 x 1 x 2 ins. orange fluorescent magnetic module in the bottom of the monument hole. Buried the original monument upside down along the west edge of the remonumented corner point as a memorial. Set a carsonite witness marker post 1.5 feet north.

Aluminum Cap Markings

T12N R67W

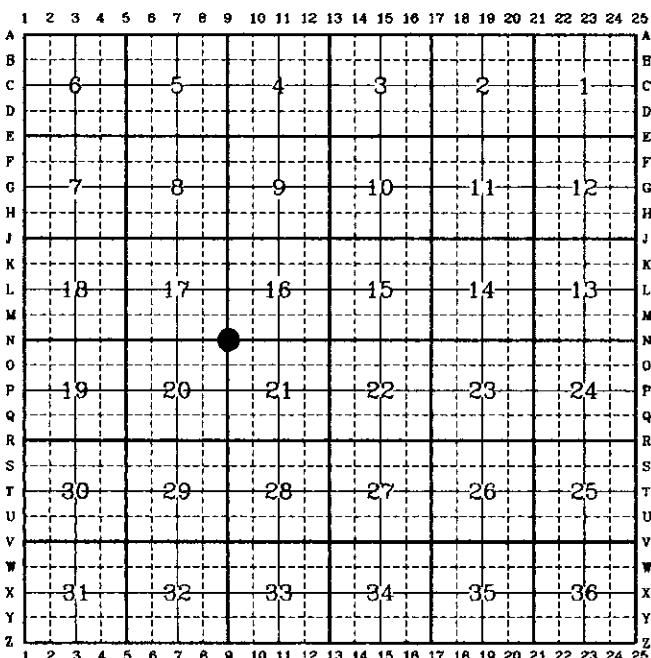
S17	S16
S20	S21

 1999
 P.L.S. 2927

See back of this sheet for measurements to other found or set monuments in the area.

Date of Field Work: Dec. 18, 1998 & Jan. 5, 1999 Office Reference: A.V.I. Job No.: 2-2085C

CROSS INDEX DIAGRAM



Corner Name: NE Cor. Section: 20
 SBRPEPLS/PLSW: March 1994

Firm/Agency, Address
 Paul A. Reid, P.L.S.
 A.V.I., p.c.
 2035 Westland Road
 Cheyenne, WY 82001

Telephone Number:
 (307) 637-6017

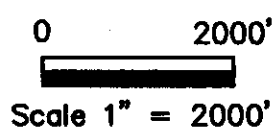
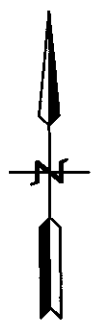
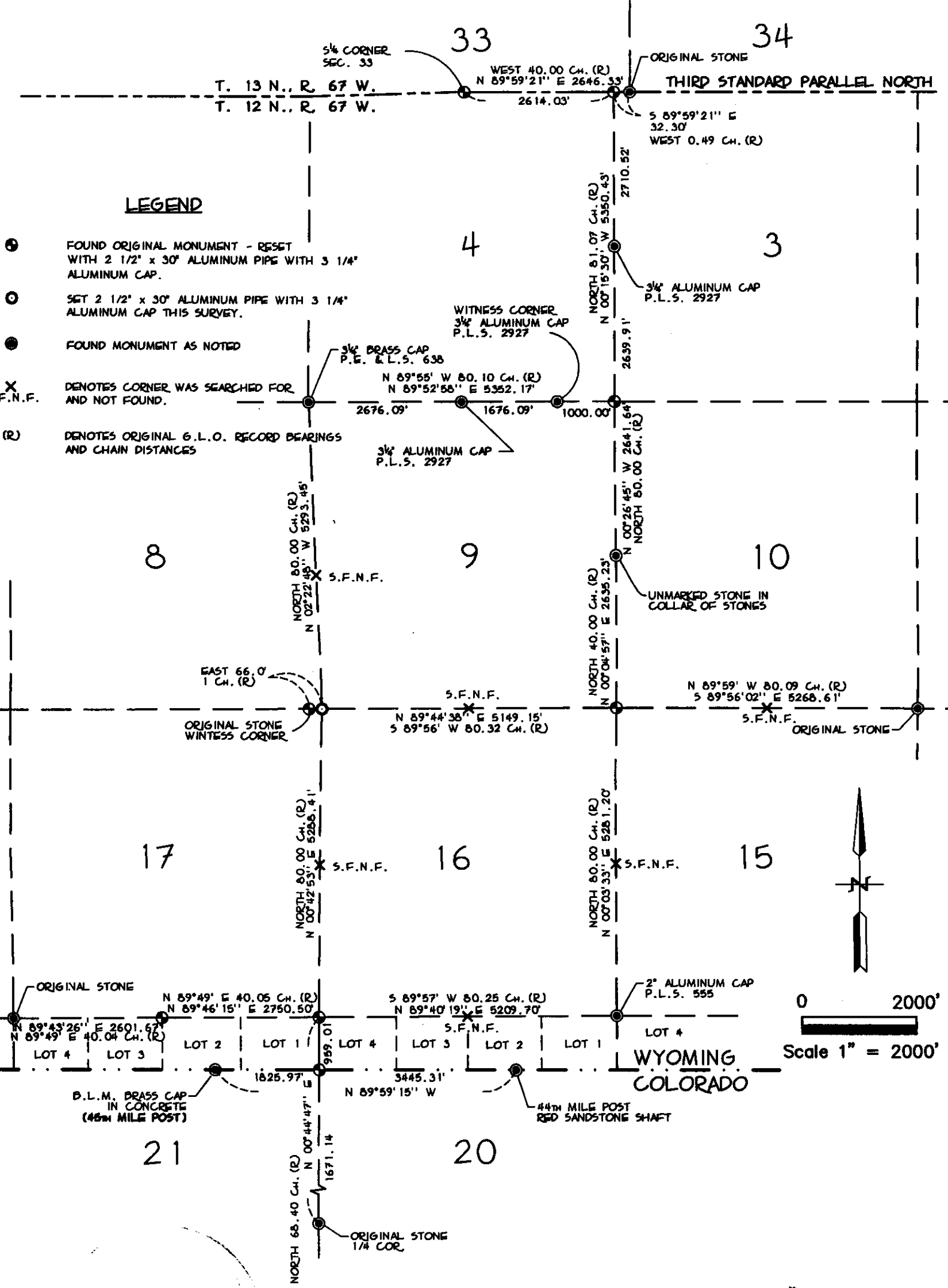
This corner record was prepared by me or under my direction and supervision.
SEAL & SIGNATURE



T.12N., R.67W.; 6th P.M. Cross-Index No.: N-9

LEGEND

- FOUND ORIGINAL MONUMENT - RESET WITH 2 1/2" x 30' ALUMINUM PIPE WITH 3 1/4" ALUMINUM CAP.
- SET 2 1/2" x 30' ALUMINUM PIPE WITH 3 1/4" ALUMINUM CAP THIS SURVEY.
- FOUND MONUMENT AS NOTED
- X DENOTES CORNER WAS SEARCHED FOR AND NOT FOUND.
- (R) DENOTES ORIGINAL G.L.O. RECORD BEARINGS AND CHAIN DISTANCES



SKETCH OF SURVEY
 T. 12 N., R. 67 W., 6TH P.M.
 LARAMIE COUNTY, WYOMING

